



CV: Qassim Afzal

Professional
Media
Voluntary
Media Spokesperson

Contact:

QASSIM AFZAL, MA
International Business

PhD. Current
International Action Research
(foreign policy)

Consultants in

*economic development
strategic marketing,
business management
Micros & SME's*

Media

Production Consultant

*TV Presenter
broadcast journalism
TV & radio, scripts, producing,
directing, specialist human
resource*

Lecturer & Researcher
interfaith, cultural, & related
political trends.



Personal Remarks

I am Manchester born entrepreneur, consultant, academic, Chief Executive Officer of ABI Media Marketing Consultancy, holding a Masters Degree in International Business, researching Doctorate in foreign policy, Expertises in both private and public sectors, economic development, strategic marketing, business networking, faith diversity, fdi, globalisation, a trade portfolio: China, India Pakistan, USA with 10 years in media, producer, director, tv presenter, broadcast journalist, experienced political advisor and, former local government association (LGA) equality executive.

My media profession began in 1993 alongside the BBC, covering local national and international areas, through television, radio, and written Journalism.

I am an extremely well connected individual at every level of the community both at home in the UK and internationally. I find media fascinating, with creative, enervative communication skills, composed in a friendly inquisitive manner with excellent investigator and rhetorical questioning approach, understand and reflecting on the topics of the moment, engaging with individual to the masses, through mainstream media organizations.

My role in the Regional Development Agency as the Vice Chair of the Ethnic Minority Business forum (EMBF NW), a strategic advisory group to the NWDA and regional partners: Business Link Northwest, Learning & Skills Council and UK Trade & Investment), has enhanced my understanding of the Region, to help improve the quality of life and economic prosperity of the north-west, endeavoring to drive the economic development, regeneration, business competitiveness and improving the skills base, targeting issues related to Procurements, Business Skills Support, and lucrative market access.

I am well versed in making many serious judgements, as an individual or part of a collective group, drawing the reality of the situation reflecting on the evidence and ethos of the situation, identifying the meritocracy of the issue at hand and confidently act on it.

Thank You
Yours Sincerely



Qassim Afzal, MA
Chief Executive Officer



Contact:

QASSIM AFZAL, MA
International Business

PhD. Current
International Action Research
(foreign policy)

Consultants in

*economic development
strategic marketing,
business management
Micros & SME's*

Media

Production Consultant
TV Presenter

*broadcast journalism
TV & radio, scripts, producing,
directing, specialist human
resource*

Lecturer & Researcher
interfaith, cultural, & related
political trends.





Profession Multi Practitioner

Contact: Qassim Afzal
 ABI House
 339 Cheetham Hill RD
 Manchester
 M8 0SN, (UK)
 0161 205 2885
 07956 873 046
 Qassim.afzal@ntlworld.com
 Www.qassim-afzal.com

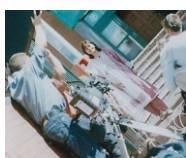
Sector	Organisation	Detail	Information	States
Businesses (1985-Current)	ABI Group of Companies UK ABI Media Marketing Consultancy JOREL Designer Clothing	Holding Consultancy Designer	Trading, Textiles, Property Economic Development Menswear	Chief Executive TV Production Marketing
Education (1976 to 07)	University of Salford University of Central Lancashire University of Central Lancashire University of Manchester University of Manchester Manchester Metropolitan University School & Private Studies	PhD researching MA masters Intermediate BA/MA (pt) BA (pt) Graduated O&A levels	UN Foreign Policy International Business Certificate in Languages Theology, Islam Middle-Eastern Studies Math's, States, Computing Pure/Applied Math, States,	Plebiscite MAIB MACL TH250 Part MMU Physics
Research Papers (1996 to 07)	International Accounting International Business International information systems International Marketing International Dimensions HRM Understanding MNE Economic Growth Advertising in the Global Market Place International Developments The Arms Industry Shock Marketing	Finically Management Strategic Management Global Strategies Domestic & International Communication Complexities Industrial Innovation Industrial Nature Textile Industry Size & Objectivity Transcending Borders	Standardization Multinational Enterprises Implementation Adoption, Global Pyramid Implementations Dynamics Organization Promotion Global Competition Monetary Gains Mass Media Theme	MNE MNE MNE MNE MNC ITC Technology MNE GATT/ITO Market Share Market Entry
Professional Research	Economic Initiative Group (M/CR) Salford City Council Bury Economic Development Unit Bury Economic Development Unit Business Link Rochdale (TEC) Business Link Oldham	Business Network Business Network Business Network Economic, Labour Market Business Network Consultants	Study Study Development Study Dev Registered	Commissioned Commissioned Commissioned Commissioned Commissioned Accredited
Clientele LGA	Manchester City Council Salford City Council Rochdale City Council Bury City Council Liverpool City Council	EDU EDU EDU EDU MNE/ FDI	Investigations Development Research SME/Micro Foreign Direct	Contractor Contractor Contractor Researcher Investment
Accredited Development. (1995+)	Manchester Business Consortium Salford Business Venture SBV Business Link BL TEC's NW Chambers of Commerce M/cr Chambers of Commerce Oldham Chambers of Commerce Bury	Enterprise Centre Enterprise Centre Governmental Governmental Governmental Governmental Governmental	Business Development Business Development Business Accredited Agencies Accredited Agencies Accredited Agencies Accredited Agencies Accredited	Consultant Consultant Consultant Consultant Consultant Consultant Consultant
Enterprise Trade/Industry (2006-current)	Ethnic Minority Business Forum (EMBF) 50:50 Vision (NWDA) Northwest Development Agency HM Customs Excise NW Consultation	NW Region NW Region NW Region Northwest Panel	Vice Chair representative (EMBF) EMBF,LSC,BL,UKTI Consultation	BoardMember Board Member Stakeholder Member
Business Orgs (1997-05)	NW Business Leadership Team NW Business Leadership Team M/cr Chambers Commerce International Business Forum (MCCI) Manchester Business Federation Business & Enterprise Form/Progress Trust Youth Charter of Sports (S. A. F)	NW Region NW Region Manchester Manchester Gt Manchester NW Region (UK to USA)	Media Economic Business Business Panel Chairman Business Forum Youth Sports	Consultation Consultation Member Board member Board Executive Sponsor
Local Gov. (1998&03)	Manchester City Council (98) Manchester City Council (03) Local Government Association (LGA)	NW Region NW Region National (elected)	Cheetham Ward Cheetham Ward Equalities Executive	Councillor Councillor Board Member
Languages Hobbies	Urdu/Hindi/Punjabi/French/Cantonese Flying Planes, Photography, News Night,	Classical Arabic , Star Trek , X-Files,	Written & Studying Poetry, Reading	Spoken Socializing,



Media Profession TV Radio Broadcaster

Contact: Qassim Afzal
 ABI House
 339 Cheetham Hill RD
 Manchester
 M8 0SN, (UK)
 0161 205 2885
 07956 873 046
 Qassim.afzal@ntlworld.com
 Www.qassim-afzal.com

Presenter (2006+)	BBC & MD TV	Current Affairs	National/International	News Issues	Anchormen
Production Consultant BBC (1995)	BBC TV BBC TV BBC TV BBC TV	Belief File Production Script Research Location Production	Education Proofing Editing Interviewing Negotiation Specialist	Key Stage 1-4 Script Authenticity Candidates Coordination Literature Facts	5 Productions Recommendations Suitability Faith Organisations Editing
Production Consultant BBC	BBC2 TV BBC2 TV BBC2 TV	News at 6 Live Sunday Program Roger Bolton	Eid Festival Eid Celebration Eid Family Celebration	Broadcast Interviewed Broadcast Interviewed Broadcast Interviewed	Production Research Production Research Production Research
Production Consultant Television (1998-2000)	BBC TV Action Time Moor TV Carlton TV Granada TV	Heaven Knows I TV Questions Special Advisor Specialist for Production Team	Entertainment Develop Investigate Culture, Faith Religious Productions Islam	Quiz Production Consultant Communities Communities Comminutes	6 Productions Edited Consultant Consultant Consultant
Production Consultant Television	BBC TV Granada TV Action Time Moor TV Carlton TV	Heaven Knows II Production Team TV Questions TV Crew TV Research	Entertainment Islam Develop Investigate On Location Candidates	Quiz Production Comminutes Edit Research Conduit	6 Productions Consultant Consultant Consultant Consultant
Broadcasted Accredited	BBC2 TV BBC2 TV BBC2 TV BBC2 TV BBC2 TV	Program One Program Two Program Two Program Four Program Five	The Essence Of Belief Guidance and Belief Pilgrimage Hajj Architecture Pilgrimage	Research, Edited Research, Edited Research, Edited Research, Edited Research, Edited	Ass/Producer Dir. Ass to Producer Dir. Ass to Producer Dir. Ass to Producer Dir. Ass to Producer Dir.
Radio Production BBC	BBC Radio BBC Radio BBC Radio BBC Radio BBC Radio	Community News Manchester Lancashire Current Affairs Current affairs Audio/Tape Research	Northwest News Production News Production News Production Political Affairs Desk Operations Political Leaders Sport Celebrates Religious Leader Current Affairs	Special events Editing Investigation Interviewing Interviewing Editing Interviewing Interviewing Interviewing Interviewing	Researcher Producer Assistant Producer Assistant Correspondent Broadcaster Broadcasting Broadcaster Journalist Broadcaster Journalist Broadcaster Journalist Broadcaster Journalist
Radio Correspondent	BBC Radio BBC Radio BBC Radio BBC Radio BBC Radio BBC Radio	Research Research Research GMR			
Interviewing Celebrates Politicians BBC/Press	Celebrate Celebrate Political Political Films Industry World Scholar Foreign Affaires World Scholar World Scholar Political Human Rights	Sportsman/Politican Musician/ Faith Celebrity Politician/Tori Broadcaster/Accademic Actor Author/Accademic Prime Minster (Fmr) Author/Accademic Author/Accademic Political/Tory Activist	Imran Khan MNA C. Steven's/ Yousif Islam Alaster Burt MP Prof. Ahmad Akbar Christopher Lee Saraj Wahaj Benazir Butto Ahmad Deedat Dr. Bilal Philips Lord Taylor Richard Ansar Buruni	With wife Jemima New Album Public Affairs Interviewing Interviewing Interviewing Interviewing Interviewing Interviewing Interviewing Interviewing	Interview Exclusive Interview Exclusive Broadcast Journalist Broadcast Journalist photography Journalist Broadcast Journalist Broadcast Journalist Broadcast Journalist Broadcast Journalist Broadcast Journalist Broadcast Journalist
Journalist & Photographer Press Organisation	Manchester Q-News Eastern Eye News Int. Q-News British Ass. Diverse Multimedia	Evening News International UK UK International (N) of Journalist Productions Network (TV) Pro.	Current Affairs Current Affairs Current Affairs Current Affairs Publication Agency Documentary MMN TV	Interviewing Interviewing Interviewing Interviewing Bureau Member Assistant Chief Editor,	Photography Journalist Photography Journalist Photography Journalist Photography Journalist Chief ABJ Producer Director Director





Media Spokesperson

Contact: Qassim Afzal
 ABI House
 339 Cheetham Hill RD
 Manchester
 M8 0SN, (UK)
 0161 205 2885
 07956 873 046
 Qassim.afzal@ntlworld.com
 Www.qassim-afzal.com

Political Media TV	BBC TV BBC TV	Question Time Question Time	Local Gov. & UN in Kosova Watersheds Media Influence	PM Tony Blair John Prescott	MP MP	Speaker Speaker
	BBC TV BBC TV	Question Time Question Time	Asylum Seekers & Control Iraq and Illegal Invasion	Clair Short Michelle Mitcham	MP MP	Speaker Speaker
	BBC TV BBC TV	Question Time Question Time	Leaders Fuel Cost, Truckers Blockade	Charles Kennedy Claire Short	MP MP	Speaker Speaker
	BBC TV	Sunday Show	Iraq	Dr John Reed	MP	Speaker
Media TV Political Press	Political All Media	TV, Radio, Press McDonald	Live & Recorded Race Case	World Wide World Wide	3000 30+	Mention Press
	Granada TV Granada TV	Its MY Life Its My Life	Sex & Youth Religion Do we Need It	Specialist Specialist	Panel Panel	Speaker Speaker
Television	ITV TV	Judi Finagan	Politics	Guest	Panel	Speaker
	BBC TV BBC TV	Darkos Haw Darkos Haw	Faith Expert Business	Guest Guest	Panel Panel	Speaker Speaker
	BBC TV	Northwest	Lottery	Guest	Panel	Speaker
Asian Programming	Channel 4 TV Channel 4 TV	Chalth Chalta Chalth Chalta	Asian Affairs Debate Asian Affairs (Women)	Guest Participant Guest Participant	Panel Panel	Speaker Speaker
	Political Series	Channel 4 TV Channel 4 TV	Peoples Parliament Peoples Parliament	Arms Sales Child Punishment	Guest Participant Guest Participant	Panel Panel
Channel 4 TV Channel 4 TV		Peoples Parliament Peoples Parliament	Private Policing Welfare	Guest Participant Guest Participant	Panel Panel	
Channel 4 TV Channel 4 TV		Peoples Parliament Peoples Parliament	MP's Interest Banning Vehicles	Guest Participant Guest Participant	Panel Panel	
Channel 4 TV Channel 4 TV		Peoples Parliament Peoples Parliament	Fertility on the NHS Northern Ireland	Guest Participant Guest Participant	Panel Panel	
Special Interview	BBC TV Prime TV	Turing Point Live	Life Changing Experiences Iraq	Martin Bashire Guest Special	20 min Panel	Speaker Speaker
	BBC TV BBC TV	Tyson Education	Anti Tyson Protest Religions Education	Jim Hancock Jim Hancock	Panel Panel	Speaker Speaker
	BBC TV	Northwest	Regional Assembly			
	BBC Radio BBC Radio	National National	Prostitution Politics and Religion	Mike Shaft	60 min 30 min	Guest Guest
	BBC Radio BBC Radio	National National	Drugs Children Racism		60 min 60 min	Guest Guest



Charity & Public Organisations

Contact: Qassim Afzal
 ABI House
 339 Cheetham Hill RD
 Manchester
 M8 0SN, (UK)
 0161 205 2885
 07956 873 046
 Qassim.afzal@ntlworld.com
 www.qassim-afzal.com

Sector	Charity & Public Organisations	Locations	Description	Positions
Enterprise Trade/Industry (2006-current)	Ethnic Minority Business Forum	NW Region	Vice Chair	Board Member
	50:50 Vision (NWDA)	NW Region	representative (EMBF)	Board Member
Business Orgs (1997-05)	Northwest Development Agency	NW Region	EMBF ,LSC,BL,UKTI	Stakeholder
	HM Customs Excise NW Consultation	Northwest Panel	Consultation	Member
	NW Business Leadership Team	NW Region	Media	Consultation
	NW Business Leadership Team	NW Region	Economic	Consultation
	M/cr Chambers Commerce International	Manchester	Business	Member
	Business Forum (MCCI)	Manchester	Business Panel	Board member
	Manchester Business Federation	Gt Manchester	Chairman	Board
Business & Enterprise Form/Progress Trust	Business & Enterprise Form/Progress Trust	NW Region	Business Forum	Executive
	Youth Charter of Sports (S. A. F)	(UK to USA)	Youth Sports	Sponsor
Local Gov. (1998&03)	Manchester City Council	NW Region	Cheetham Ward	Councillor (98)
	Manchester City Council	NW Region	Cheetham Ward	Councillor (03)
	Local Government Association (LGA)	National (elected)	Equalities Executive	Board Member
	Local Government Association (LGA)	Portfolios	Race, Faith Equality	Executive
	Local Government Association (LGA)	Portfolios	Human Right	Executive
	Local Government Association (LGA)	Portfolios	Safety Community Panel	Executive
	Progress Trust Steering Group (PTSG)	NW Region	Community Forum	Representative
Education Development (1995-05)	Standing Agreed Commission Religious	Trafford City LEA	Program of StudyKS4	Executive
	Standing Agreed Commission Religious	Manchester City LEA	Program of StudyKS4	Executive
	Standing Agreed Commission Religious	Salford City LEA	Program of StudyKS4	Executive
	Standing Agreed Commission Religious	Bury City LEA	Program of StudyKS4	Education
Establishments (1995-00)	The University of Manchester	NW Region	Mentor/Career Service	Selection Panel
	University of Manchester Institute Science	Technology	Mentor	Selection Panel
	Salford University	NW Region	Mentor	Selection Panel
	Career Service (Partnership)	Salford Uni	Steering	Advisory panel
	Career Service (Partnership)	Manchester Uni	Steering	Advisory panel
	Parrenthorn High School	Bury	Parent	Governor
Organisations (1995-00)	School Syllabus (B/REC)	Bury	Member	Sub-Committee
	Progress Trust (M/cr City Council)	Manchester	Education Forum	Chairman
	Muslim Education Council (MEC)	National	Policy	Chairman
	Multi Cultural Education Forum	Manchester	Careers	Chairman
	Bury Student & Graduates Association	Commission for	Racial Equalities (CRE)	Chairman
	National Policy Conference (faith)	Church of England	Schools & Teachers	Media (SP)
	Faith School Education	Funding	DFEE (Westminster)	Delegate
Manchester Policy Seminar	Church of England	Schools & Teachers	Chairman	
Housing &Charities (1996-06)	Johnny Johnson Housing Association	NW Region	JJHA	Board Executive
	Johnny Johnson Housing Association	National	JJHA	Board Executive
	National Housing Federation	NW Region, Merseyside	NHF	Certificated
	Voluntary Action Manchester (VAM)	Manchester	Funding	Assessor
	First Asian Support Trust	NW region	Disability	UK Task Force
	Northwest Network	NW Region	Volunteer Sector	Member
	Community Advisory Service (CAS)	National	Voluntary Sector	Chief Executive
Fundraising voluntary (1994-00)	Muslim Council of Britain (MCB)	National Community	Cohesion	Media Trainer
	Imran Khan Cancer Appeal (SKMTH)	Christie Hospital	Fund Rising	Committee
	Human Appeal International	World (Charity)	Media/Marketing	Consultant
	IRUK (NGO)	World (Charity)	Sponsor	Consultant
Equalities Boards (1994-03)	NHS Race & Health Board	NW Region	NHS	Board Member
	Manchester Race Relations Council	MCCR	Executive	Board Member
	UK & European Race Forum	UK	Member	Member
	Racial Equality Council Bury	REC	Member	Executive
	Public Equality Affairs Council of Europe	UK & European	Member	Media Coordinator
	Manchester Eid Show Case	Manchester	Festival	Chairman
	Manchester Police Department	Cultural Affairs	Community	Representative
	World and European Conferences	Against Racism	UK Race & Europe c/o	Runnymede Trust
	NW Probations Forum	Government Consultation	Community Affairs	Board
Delegation Cultural	Delegation European Parliament (EU)	Employment	Discrimination	Speaker, Delegate
	Delegation Overseas Pakistan Foundation	International	UK Councillors	Speaker/Rep.
	Delegation South Africa Durban Race	International	Conference	Delegate



Cllr Qassim Afzal, MA
(Local Governments Authorities 98 & 03))
Politician

Contact: Qassim Afzal
ABI House
339 Cheetham Hill RD
Manchester
M8 0SN, (UK)
0161 205 2885
07956 873 046
Qassim.afzal@ntlworld.com
Www.qassim-afzal.com

Sector	Organisation	Result	Elected	Details	Status	Others	
Local Gov. Elections	Councillor	Cheetham Ward	Short (57)	1998	Highest in UK,	Swing	32%
	Councillor	Cheetham Ward	Elected	1998	By election	victory	Win
	Councillor	Cheetham Ward	Elected	2003	Regain seat	2nd time	Win
General Election	Parliamentary	Candidate Small Heath	Second	2001	LD from 4th to	2nd	Increase
	Parliamentary	European Elections	List	2004	Euro List	No.4	Increase
	Parliamentary	Candidate Gorton	Second	2005	6 wk, 33%,	Swing	10.98%,
	Parliamentary	Interim Peers Panel,	Directly Elected	2004	Lords	List	Waiting
Government Bodies (LGA)	LGA works with 500 Authorities		50 Million People	0000	£74 Billion	Budget	
	Local Government Authorities		Directly Elected	2002	Equalities	Executive	LGA
	Local Government Authorities		Portfolios	2002	Race Equality	Executive	LGA
	Local Government Authorities		Portfolios	2002	Faith Issues	Executive	LGA
	Local Government Authorities		Portfolios	2002	Human Right	Executive	LGA
	Local Government Authorities		Portfolios	2002	Safety Community Panel		LGA
Party Elections	Federal Executive		Directly Elected	2002	Executive	Leadership	FE
	Federal Conference Committee		Directly Elected	2000	Executive	Member	FCC
	Federal International Relations Committee		Directly Elected	2000	Executive	Member	IRC
	Federal Conference		Trained Chair	2003	Conference	Chairing	FC
	Federal Executive Rep.		Sub Committee	2005	Liberal Int.	Congress	FE
	Federal Executive Rep.		Sub Committee	2005	ELDR	Congress	FE
	Federal Executive (SAO)		Sub Committee	2006	Review Panel	Chair	FE
	SAO	Parliamentary Candidates Association		Directly Elected	1999	Communication	Media Spokesperson
Parliamentary Candidates Association		Sub Committee	2005	Northwest	Region Executive		
Liberal Democrats Friends Pakistan		Directly Elected	2005	National	Chairman	LDFP	
Liberal Democrats Friends of Kashmir		Directly Elected	2000	National	Chairman	LDFK	
Liberal International British Group		Member	2002	Internationalist	Member	LIBG	
Liberal Democrats Youths & Students		Member	2001	National	Member	LDYS	
Liberty Network		Member	2002	National	Member	LN	
State Party	English Council		Directly Elected	1999	NW Region	Representative	
Region	NW Regional Executive		Directly Elected	1999	Manchester	Representative	
	NW Regional Executive (Policy)		Sub Committee	2000	Policy	Committee	
	NW Regional Executive (Conference)		Sub Committee	2000	Conferences	Committee	
City Part	City Party of Manchester		Directly Elected	2001	Executive	Chairman	
	Candidates Committee		Sub Committee	2001	Executive	Representative	
	Candidates Panelling		Sub Committee	2001	Executive	Interviewer	
	Strategy Committee		Sub Committee	1999	Executive	Representative	
Constituency	Blackley Constituency		Directly Elected	1999	Executive	Chairman	
	Blackley Constituency		Directly Elected	2005	Executive	Vice Chair	
	Blackley Constituency		Directly Elected	2006	Executive	Memberships Sec	
	Blackley Constituency		Directly Elected	2005	Executive	Sec General	
	Cheetham Ward		Directly Elected	1998	Executive	Chairman	
Constituency	Gorton Constituency		Directly Elected	2007	Executive	Committee	
	Gorton Constituency		Directly Elected	2007	Rep	Federal Conferrees	
	Gorton Constituency		Directly Elected	2007	Rep	NW Conference	



Cllr Qassim Afzal, MA
(Local Governments Authorities 98 & 03))
Politician

Contact: Qassim Afzal
ABI House
339 Cheetham Hill RD
Manchester
M8 0SN, (UK)
0161 205 2885
07956 873 046
Qassim.afzal@ntlworld.com
www.qassim-afzal.com

Councillor Council (policy)	Education LGA		Policy Motion	1998	Mcr City Council	Speaker	Mover
	NW Asylum Seekers Consortium	(Ex13f)	Policy Motion	1999	Mcr City Council	Speaker	Mover
	Iraq, 911Manchester		Policy	2003	Mcr City Council	Speaker	Rep
Responsibilities	Social & Urban Strategy	SRB	Committees	1998	Mcr City Council		Rep
	Education Executive		Committees	1998	Mcr City Council		Rep
	Housing & Cleansing		Committees	1998	Mcr City Council		Rep
	Highways & Environment		Committees	1998	Mcr City Council		Rep
	Community Regeneration		Committees	1998	Mcr City Council		Rep
	Youth, Sports & SACRE		Committees	1998	Mcr City Council	Spokes Person	
	Multi Cultural Action Group		Group	1998	Mcr City Council	Spokes Person	
Other Political Bodies	British Pakistan Kashmir	Cllr Forum NW	Cross Party	1998	Executive	Vice Chair	
	National Ass. Black Asian Minorities Cllrs		Cross Party	1999	NABAEM	Joint Secretary	
	British Pakistan Policy Committee		Cross Party	2004	Executive	Chairman	
	Liberal Democrats & Parliamentarians		Faith Schools	2004	Working Ctte.	Chairman	
	International Relations Subcommittee		Islam in the West	2004	Working Ctte	Policy	drafter
	Liberal International (LI) HE Dr Maleeha		Women in Islam	2005	Liberal Club	Whitehall	chair
International	Delegation South Africa Durban Race		Discrimination	1998	Conference	Delegate	
	Delegation USA Jewish Muslim Dialogue		Inauguration	2002	Speaker	California	
Parliamentary Members	Delegation to European Parliament		ELDR	2000	Employment	Directive	
	Delegation to Pakistan National Assembly		OPF	1999	UK Councillors	Speaker	Rep LD
	Delegation LibDems Friends of Pakistan		Parliamentary	2003	Speaker/House	Leader	
	Delegation LibDems Friends of Kashmir		Fact Finding	2003	Line of Control	Leader	
	Delegation Brussels NATO HQ		Foreign Policy	2005	Iraq/Afghanistan	Delegate	
	Delegation LibDems Friends of Pakistan		Presidential	2005	President	PM	
Delegation LibDems Friends of Kashmir		Earthquake	2005	OUCOA	PM		
Policy Papers Author/Mover Speaker Second	Racially Related Terminology		Policy Author	1999	NW Region	Speaker	Mover
	Commission for Racial Terminology		Policy Research	1999	NW Region	Commission Chair	
	Central Government Funding		Policy	2003	NW Region	Speaker	
	Racial Terminology Policy		Policy Author	1998	NW Region	Speaker	Mover
	Protecting People Religious Discrimination		Policy Motion	2001	NW Region	Speaker	Mover
	911 Emergency Motion (Condemnations)		Policy Author	2001	NW Region	Speaker	Mover
	Vote Rigging in LGE		Policy Draft	2002	NW Region	Author	
	Effected Public Transport		Policy Motion	2004	NW Region	Speaker	Second
Kashmir Peace Bid		Policy Author	2002	Mid Region	Speaker	Mover	
Federal conference	WTO Working Env. Child Labour		Policy	2000	Federal	Speaker	
	Protecting Civil Liberties religion	(F6)	Policy Motion	2001	Federal	Speaker	
	Religious Discrimination	(F6)	Policy Amend	2001	Federal	Speaker	Mover
	India Pakistan (Kashmir UN Res.)		Policy Author	2002	Federal	Speaker	Mover
	Iraq War, UN-SC Article 1441	(F31)	Policy Composite	2002	Federal	Speaker	
Faith Schools Policy Consultation		Working Group	2004	Federal Chair	Speaker	Mover	
Public Speaking	Amnesty International		Iraq Policy	2004	AGM	Speaker	Panel
	Islam in the West Policy Paper		Re Draft	2003	Congress	Senegal	Moved
	Tribal Voting		Research Paper	2002	National	BBC	TV
	European Expansion, the case for Turkey		Guardian Media	2004	University	Speaker	Panel
	CRE Leadership Challenge' diversity in		Parliament	2000	Whitehall	Speaker	Panel
	New Age New Beginning		Bury Inter faith	2000	Lord Mayor	Speaker	Panel
	London Bombing Admirals Pub		Terrorism	2000	City Centre	Speaker	Panel
	Ethnic Minorities Dev. Association		Hijaab Debate	2000	B/Burn College	Speaker	Lecture
	Peace in the Middle East for All		Student Rally	2001	Mcr University	Speaker	Panel
	Anti War Rally (10,000 peace protesters)		Public Rally	2003	Mcr St. Peters Sq	Speaker	



Cllr Qassim Afzal, MA
(Local Governments Authorities 98 & 03))
Politician

Contact: Qassim Afzal
ABI House
339 Cheetham Hill RD
Manchester
M8 0SN, (UK)
0161 205 2885
07956 873 046
Qassim.afzal@ntlworld.com
Www.qassim-afzal.com

Parliamentarians

Consultation meetings	Leaders Tour/ Manchester	Paddy Ashdown	MP	1999	Accompanied	Assisted	Visits
	Censers 2000 Kashmir	Richard Allan	MP	1999	Sheffield	Activist	Meeting
	Human Rights Peace Subcontinent	Menzies Campbell	MP	1999	Portcullis	House	Dialogue
	Multi Cultural Community	Chris Davis	MEP	1999	NW Region	Political	Support
	Religious Discrimination	Liz Lynn	MEP	1999	Working	Directive	Faith
	WTO Child Salve Labour	Gram Watson	MEP	1999	Developing	Countries	EU
	WTO and International Standards	Nick Clegg	MEP	1999	GATT	Quotas	Trade
	International Delegation LDFK	DR Jenny Tonge	MP	2003	Pakistan	Kashmir	LoC
	International Delegation LDFK	Simon Hughes	MP	2004	Pakistan	President	Refugees
	Pakistan High Commission	Charles Kennady	MP	2002	Ambassador	A.K	Jaffer
	Pakistan High Commission	Simon Hughes	MP	2002	Ambassador	Dr Maleeha	Lodhi
	Pakistan High Commission	Charles Kennady	MP	2004	Ambassador	Dr Maleeha	Lodhi
	Pakistan High Commission	Menzies Campbell	MP	2004	Ambassador	Dr Maleeha	Lodhi
	USA Embassy	British Muslims	HE	2004	Ambassadors	Reception	
Saudi Arabia Embassy	British Muslims	HE	2005	Ambassador	Prince	Turki	
Saudi Arabia Embassy	Nominated to WEF	HE	2005	Ambassador	Prince	Turki	
Indian High Commission	Communities		2003	Future	Developments		
Political Engagements	Bankers Association Reception	Charles Kennady	MP	2004	Dorchester	Speaker	1000 Guest
	Human Foundation Event	Joan Walmsley	Lords	2004	CIS	Guest	1000 Guest
	Qassim Afzal LibDems Reception	Patcy Colton	MP	2002	Chair	Ward	1000 Guest
	Cultural Heritages Discussions	Mary Harney dept.	PM	1999	Councillor	Ward	300 Guest
	Cancer hospital Fundraising	Imran Khan	MNA	2000	Councillor	Ward	500 Guest
	Pakistan PM Visit to Manchester	Nawaz Sharif	PM	2000	Host	Org.	10,000 Guest
Guidelines on Religious Groups	HS Jack Straw	MP	1997	Blackburn	Rep.		
Racial Equality, CRE	Sir Herman Ously	Lords	2003	NW Cllr	Cross Party		
Party Conference	Party Business	Chair: Lynne Featherstone MP			Aide: Qassim Afzal		
	F37 Speech by Mark Oaten MP,				Shadow Secretary		
		Chair: Cllr James Gurling			Aide: Qassim Afzal		
	F17 Reports of the Parliamentary Parties of the				Liberal Democrats		
	Movers: Andrew Stunell MP	Chief Whip, House of Commons			Lord Roper (Chief Whip, House of Lords)		
	Bill Newton-Dunn MEP	Chief Whip, European Parliament					
	Party Business	Chair: Cllr James Gurling			Aide: Qassim Afzal		
	F18 Federal Policy	Committee Report			Mover: Jeremy Hargreaves		
	Vice-Chair	Federal			Policy Committee		
	Policy Motion	Chair: Geoff Payne			Aide: Qassim Afzal		
F25 Standards	Board for England			ALDC			
Mover: Richard Kemp	Summation: Howard Sykes						
Policy Motion	Chair: Qassim Afzal			Aide: Cllr Sarah Boad			
F4 Tax Credits	Mover: David Laws MP			Shadow Secretary Pensions			
Summation:	Danny Alexander MP			Shadow Minister Pensions			



Cllr Qassim Afzal, MA
(Local Governments Authorities 98 & 03))
Politician

Contact: Qassim Afzal
ABI House
339 Cheetham Hill RD
Manchester
M8 0SN, (UK)
0161 205 2885
07956 873 046
Qassim.afzal@ntlworld.com
Www.qassim-afzal.com

Parliamentarians

Consultation meetings

Censers 2000 Kashmir	Richard Allan	MP	1999	Sheffield	Activist	Meeting
Human Rights Peace Subcontinent	Menzies Campbell	MP	1999	Portcullis	House	Dialogue
Kashmir Exhibition	Chris Davis	MEP	2004	NW Region	Political	Support
Kashmir Policy Motion	Liz Lynn	MEP	2002	Midlands	Seconder	UK
International Delegation LDFK	DR Jenny Tonge	MP	2003	Pakistan	Kashmir	LoC
International Delegation LDFK	Simon Hughes	MP	2004	Pakistan	President	Refugees
Pakistan High Commission	Charles Kennady	MP	2002	Ambassador	A.K	Jaffer
Pakistan High Commission	Simon Hughes	MP	2002	Ambassador	Dr Maleeha	Lodhi
Pakistan High Commission	Charles Kennady	MP	2004	Ambassador	Dr Maleeha	Lodhi
Pakistan High Commission	Menzies Campbell	MP	2004	Ambassador	Dr Maleeha	Lodhi

Political Engagements

Bankers Association Reception	Charles Kennady	MP	2004	Dorchester	Speaker	1000 Guest
Human Foundation Event	Joan Walmsley	Lords	2004	CIS	Guest	1000 Guest
Qassim Afzal LibDems Reception	Patcy Colton	MP	2002	Chair	Ward	1000 Guest
Cancer hospital Fundraising	Imran Khan	MNA	2000	Councillor	Ward	500 Guest
Pakistan PM Visit to Manchester	Nawaz Sharif	PM	2000	Host	Org.	10,000 Guest



Cllr Qassim Afzal, MA
 (Local Governments Authorities 98 & 03))
Politician

Contact: Qassim Afzal
 ABI House
 339 Cheetham Hill RD
 Manchester
 M8 0SN, (UK)
 0161 205 2885
 07956 873 046
 Qassim.afzal@ntlworld.com
 Www.qassim-afzal.com

UK National & Regional Bodies	HM Customs Excise NW Consultation Local Government Association	Northwest Panel LGA	Member Equalities Executive	Consultation Board Member
	NW Business Leadership Team NW Business Leadership Team Northwest Development Agency Northwest Development Agency	NWDA NWDA NWDA NWDA	Media Economic 5050 Vision EMBF	Consultation Consultation Board Member Board Member
	Northwest Development Agency Northwest Development Agency Northwest Development Agency Northwest Development Agency Northwest Development Agency Northwest Development Agency Northwest Development Agency	NWDA EMBF NWDA ODC NWDA EMBF NWDA EMBF NWDA GONW NWDA CREME NWDA EMBF	Away day Team Building 2012 Business Benefits Marketing Brochure DVD Film Production Business Support Ethnic Entrepreneurs UKTI (NW & Pakistan)	Mission Statement Conference Delegated Delegated Simplification Delegate Lead Person
	Northwest Development Agency	NWDA ITA	International Trade	Organizations

Appointments